

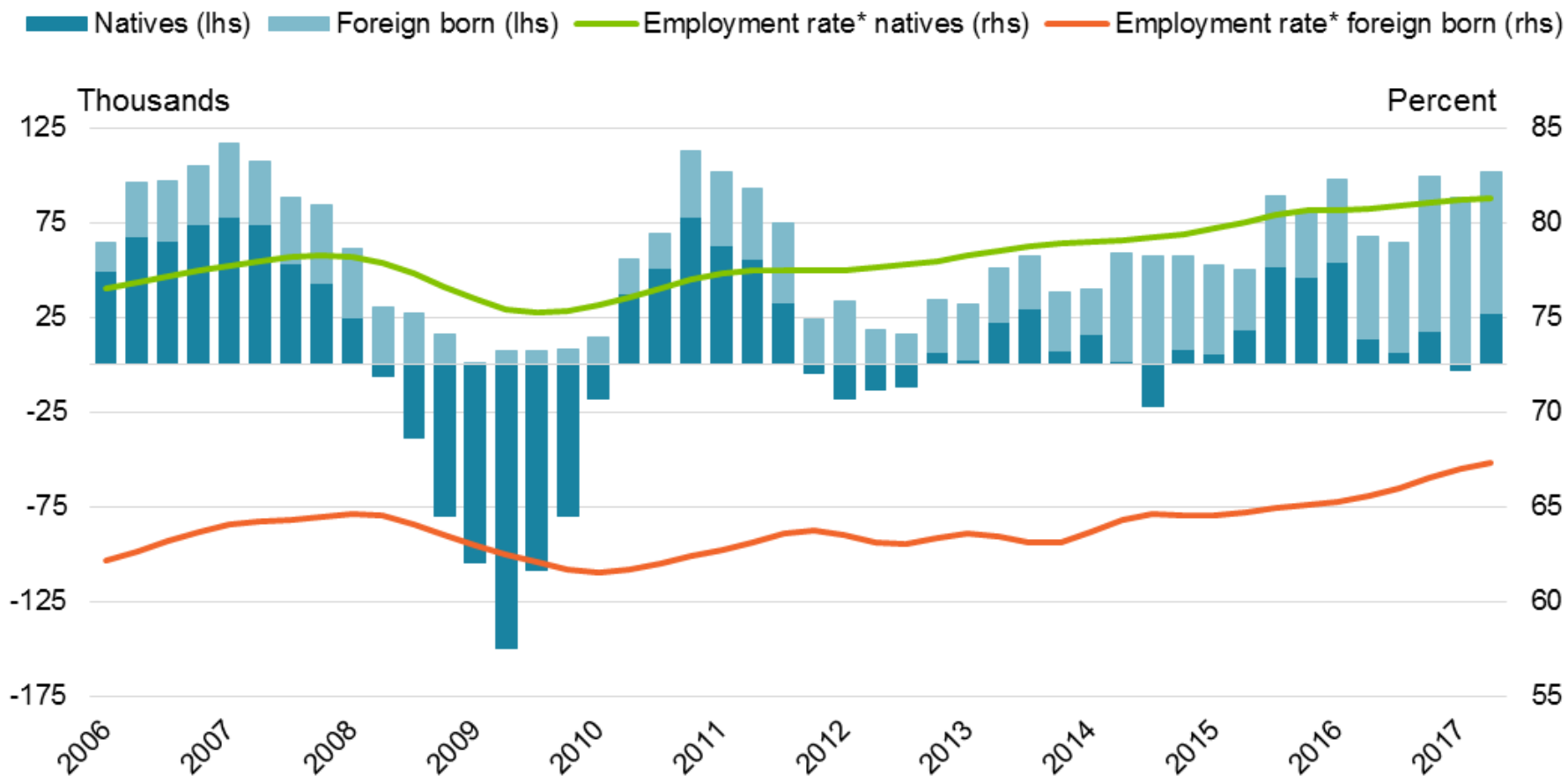
Sustainable integration – the role of the PES

Andreas Mångs
Analyst

 **Arbetsförmedlingen**

Eight of ten new jobs to foreign born

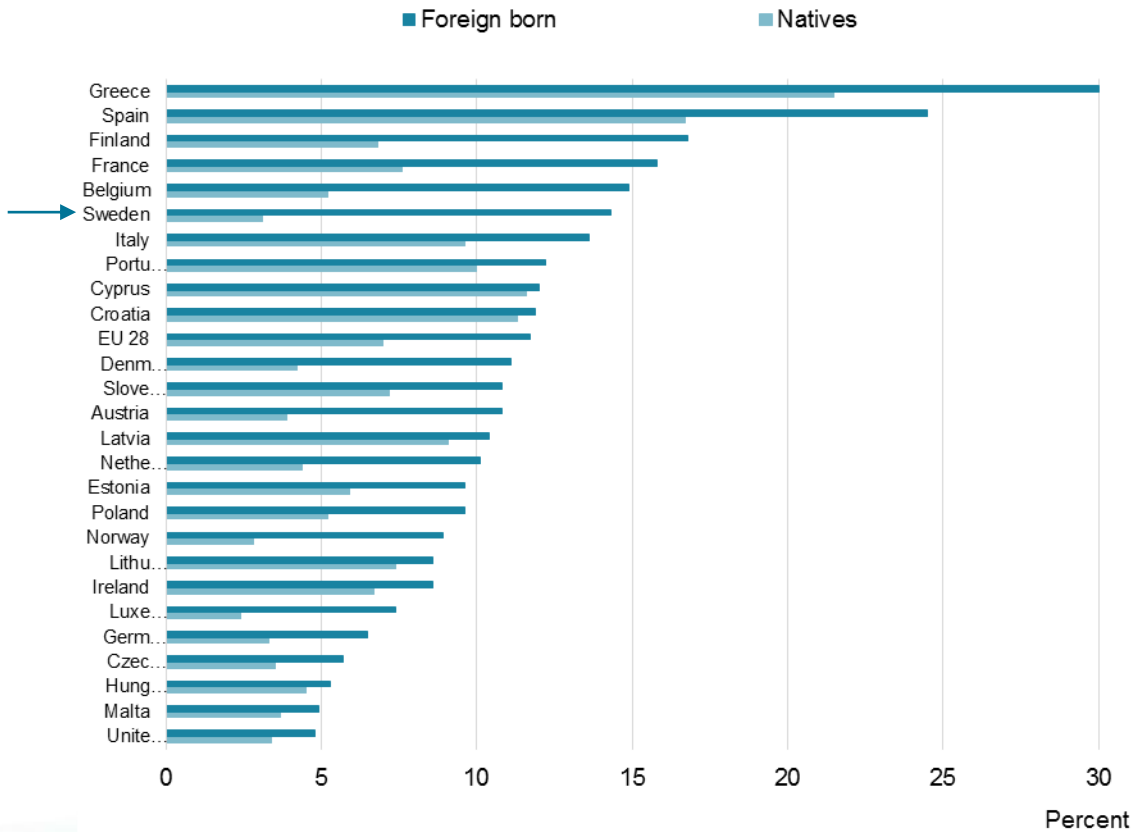
Employment rate 16-64 years, change per quarter, 2006q2 - 2017q3



*Seasonally adjusted trendvalues
Source: Statistics Sweden

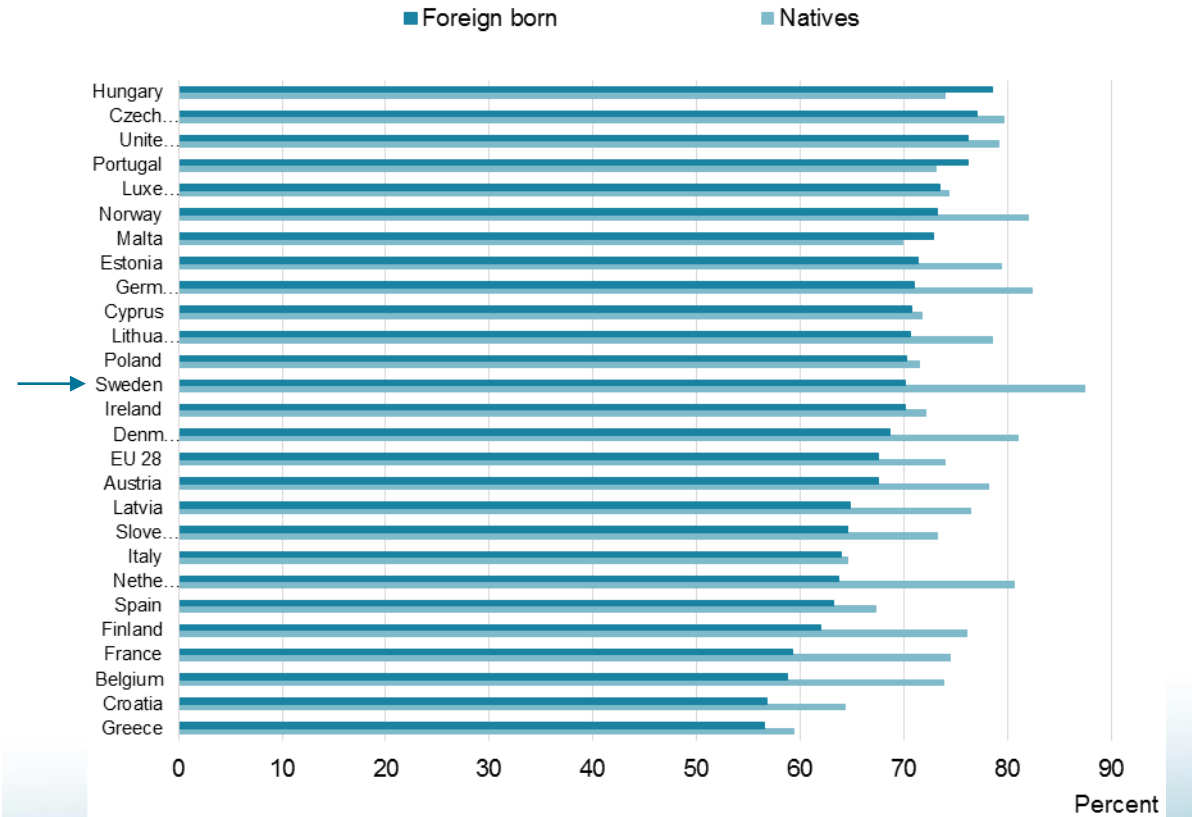
Internationally high unemployment rate but also high employment rate among foreign born

Unemployment rate 25-64 years, 2016
EU 28* and Norway



Source: Eurostat
*For Bulgaria, Romania and Slovakia data on foreign born is not available.

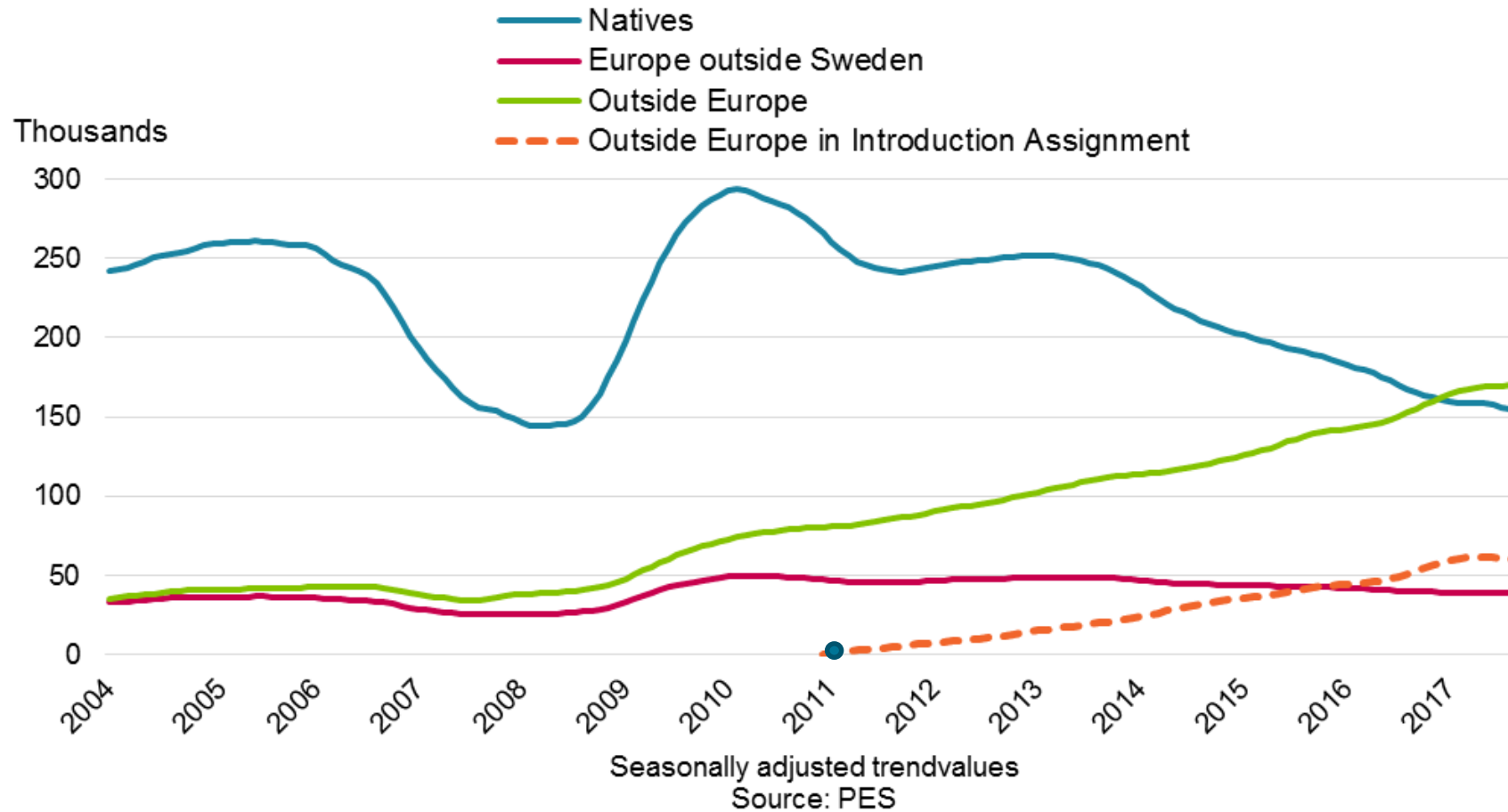
Employment rate 25-64 years, 2016
EU 28* and Norway



Source: Eurostat
*For Romania data on foreign born is not available. Slovakia and Bulgaria are also excluded.

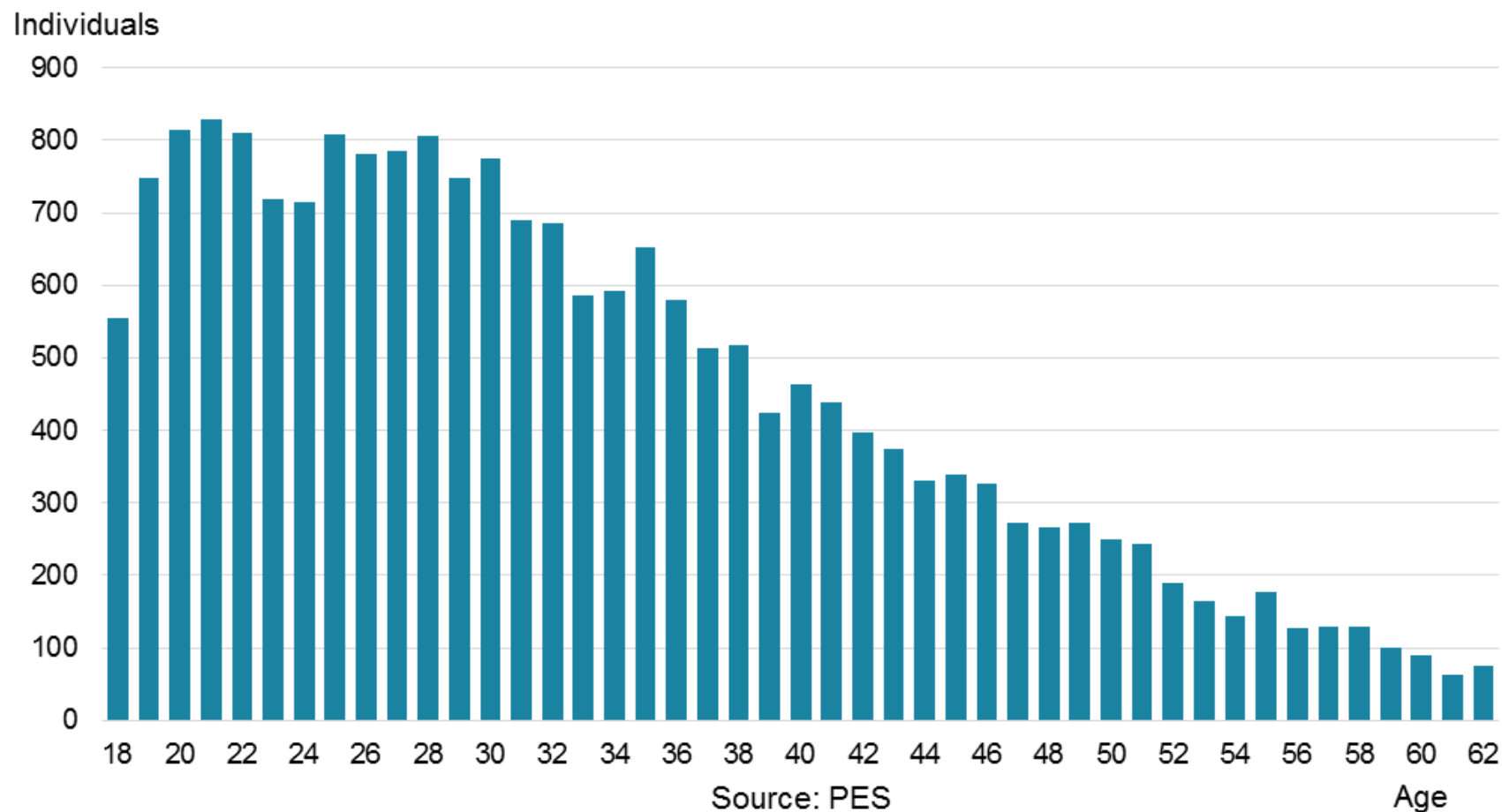
A majority of the registered unemployed are born outside Sweden

Number of registered unemployed at the PES, jan. 2004 - sep. 2017

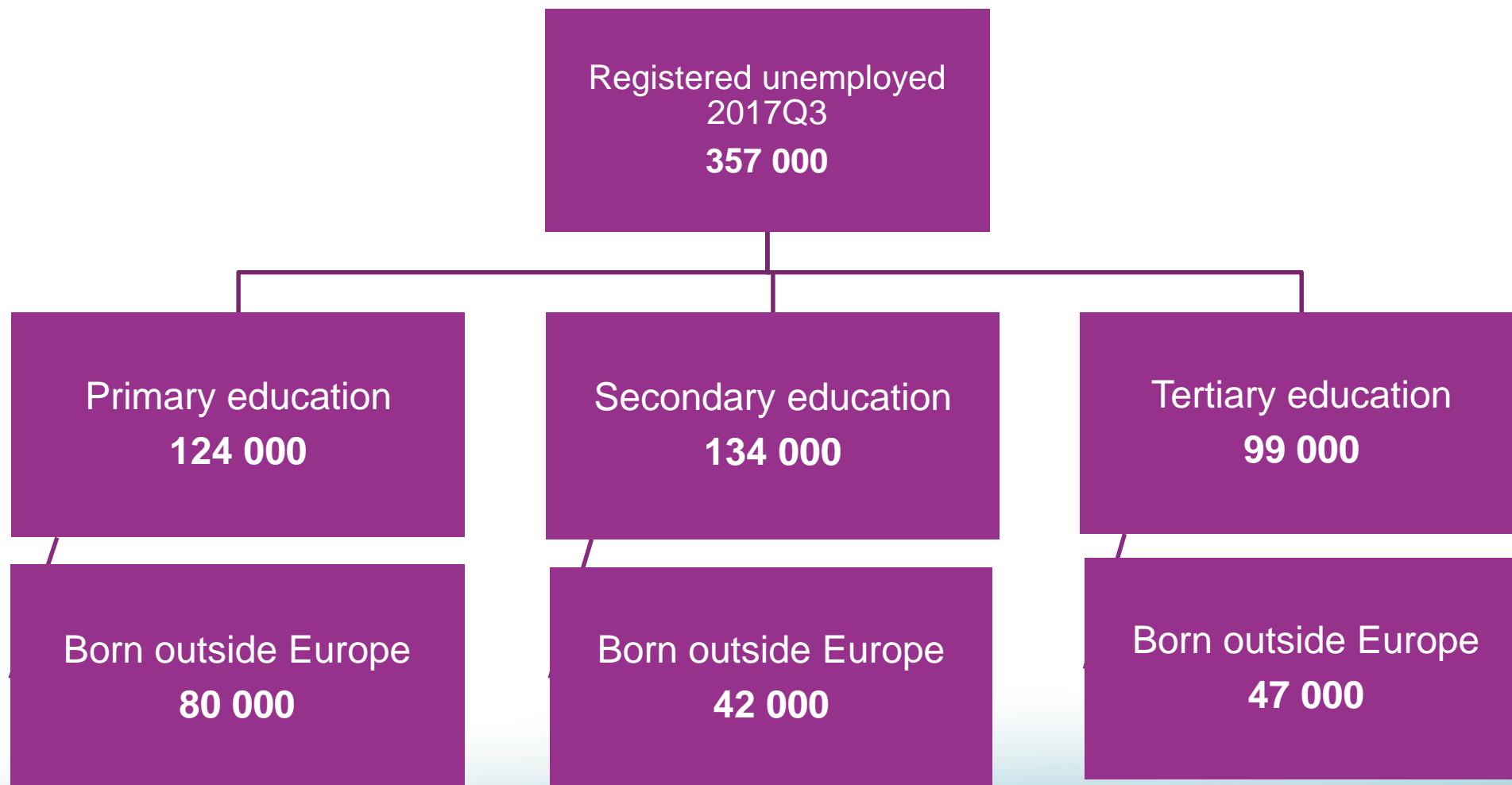


● The Introduction Assignment Program is introduced

7 out of 10 in the introduction assignment program are younger than 40

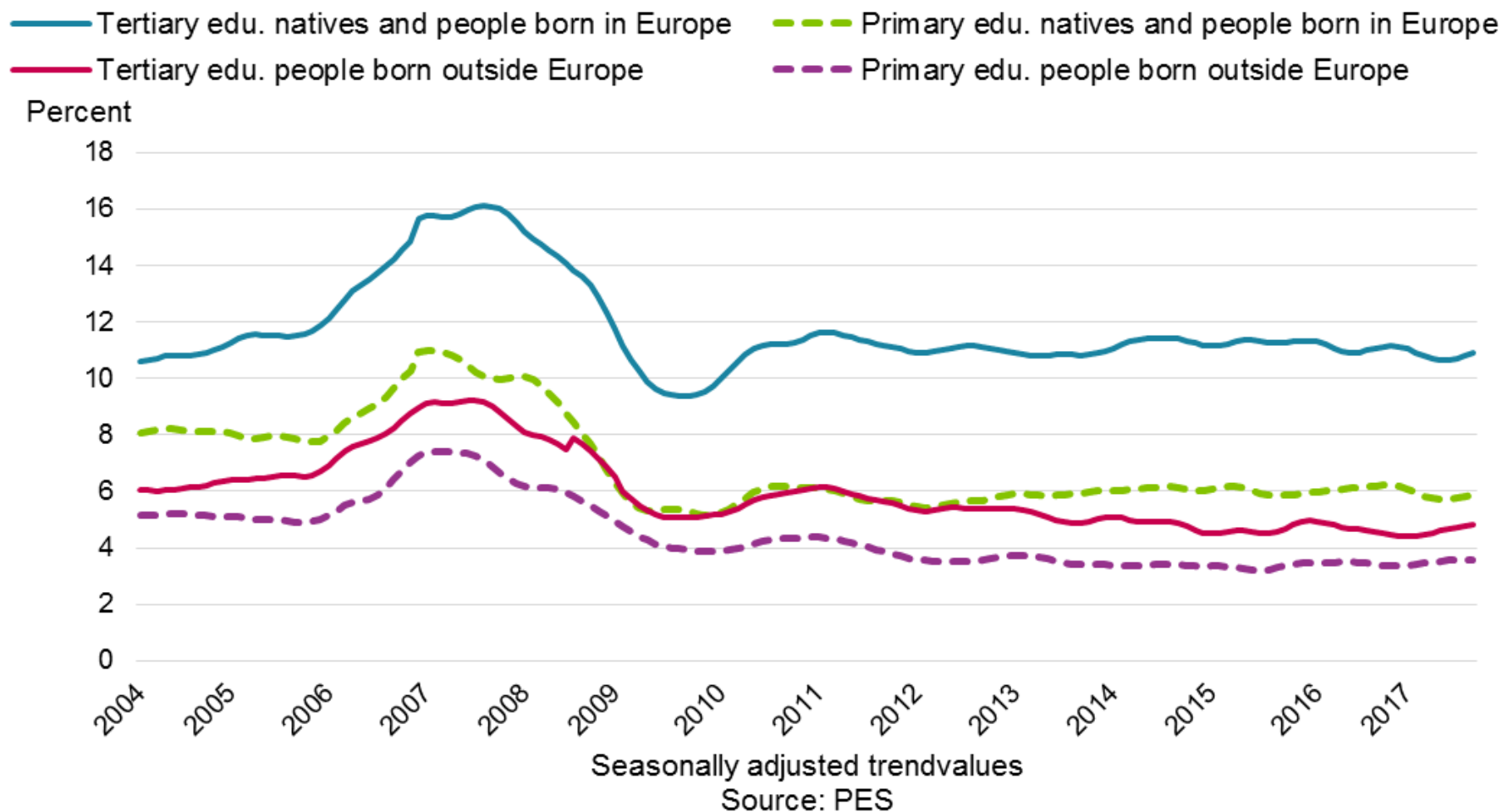


A significant share of the unemployed lacks adequate education



The outflow to work is low among people born outside Europe

Monthly outflow to work, jan 2004 - sep 2017



Education efforts are crucial – but not the only solution

- **Labour demand continues to be strong in 2018-2019, but significant imbalances.**
 - Labour shortages, already at high levels, will continue to increase.
- **Central objective for the PES to match and guide to education that leads to work.**
- **Extensive long-term education and training efforts are central.**
 - Openings of more than 90 000 new positions in adult-education until 2020.
 - Educational-duty, studystart support, sharper labour market training.
- **A combination actions and policy reforms will be necessary.**
 - Subsidized employment, lower thresholds, low-skilled jobs, etc.
- **Cooperation between different stakeholders are important.**
 - PES, trade unions, employer associations, municipalities, regional actors, private business...