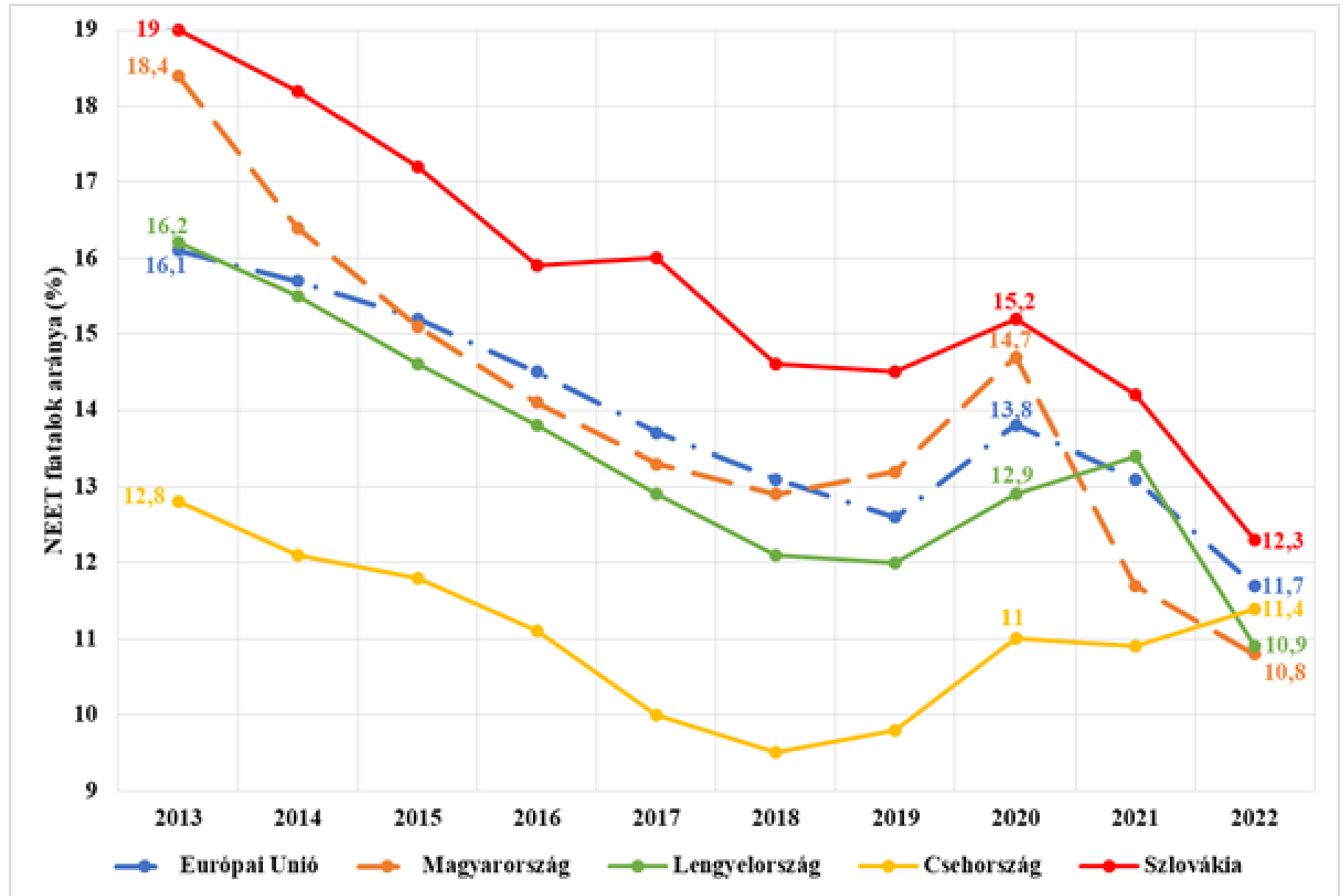


GAZDASÁGFEJLESZTÉSI  
MINISZTERIUM

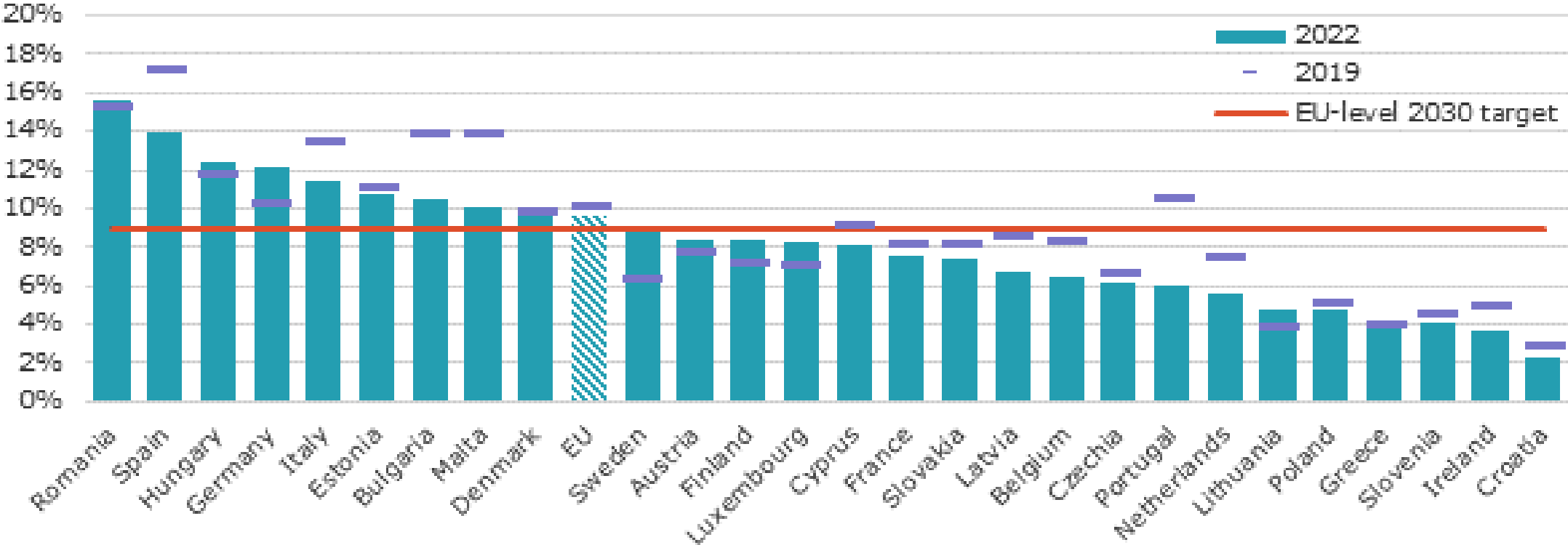
# PANEL 3: Human Supporting Services Mental Health, Well-being, Employment, Outreach and Job Readiness The Hungarian case of the reinforced YG+



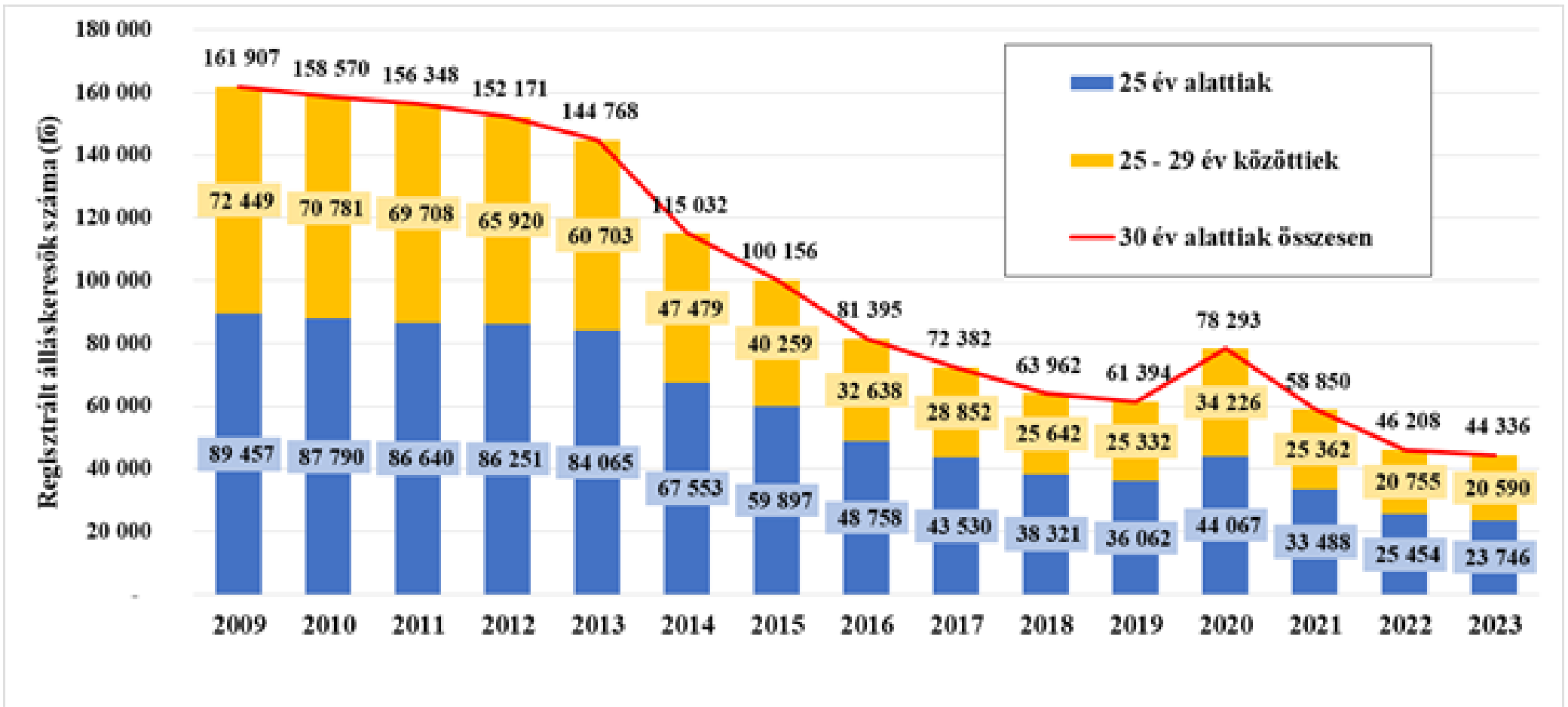
# NEET rates in the region 2013-2022



# ESL rates in the EU27



# NES registry 2009-2023 (U25/U30)



# What is new? Key challenges

- the **target age group has been broadened**, on the other hand, in line with the recommendation of the reinforced Youth Guarantee, more emphasis should be put on reaching the target group and more focus should be put on **targeting young people with fewer opportunities**
- **strengthen the role of training and reach inactive young people**
- In order to comply with the above, we want to put the implementation of the Youth Guarantee on a new footing by involving the OFA Non-profit Ltd. This will include **nation-wide methodological support**, additional capacity in services where needed and stronger **social media communication** to reach young people.

# New Service tiers in the YG PLUS



Outreach at NUTS  
II and IV levels

Case officers  
/YG mentors  
in each NUTS  
IV levels

2nd service  
line intensive  
counselling

# Key discussion points

- Reaching out when a national ESL database is not fully available for the PES
- Developing a new national YG service protocol for all NUTS IV and QA the services
- Effective combination of the different LM services & ALMPs and the tools of the VET system (under another government domain).