



Hybrid job consulting services targeting for job seeking parents

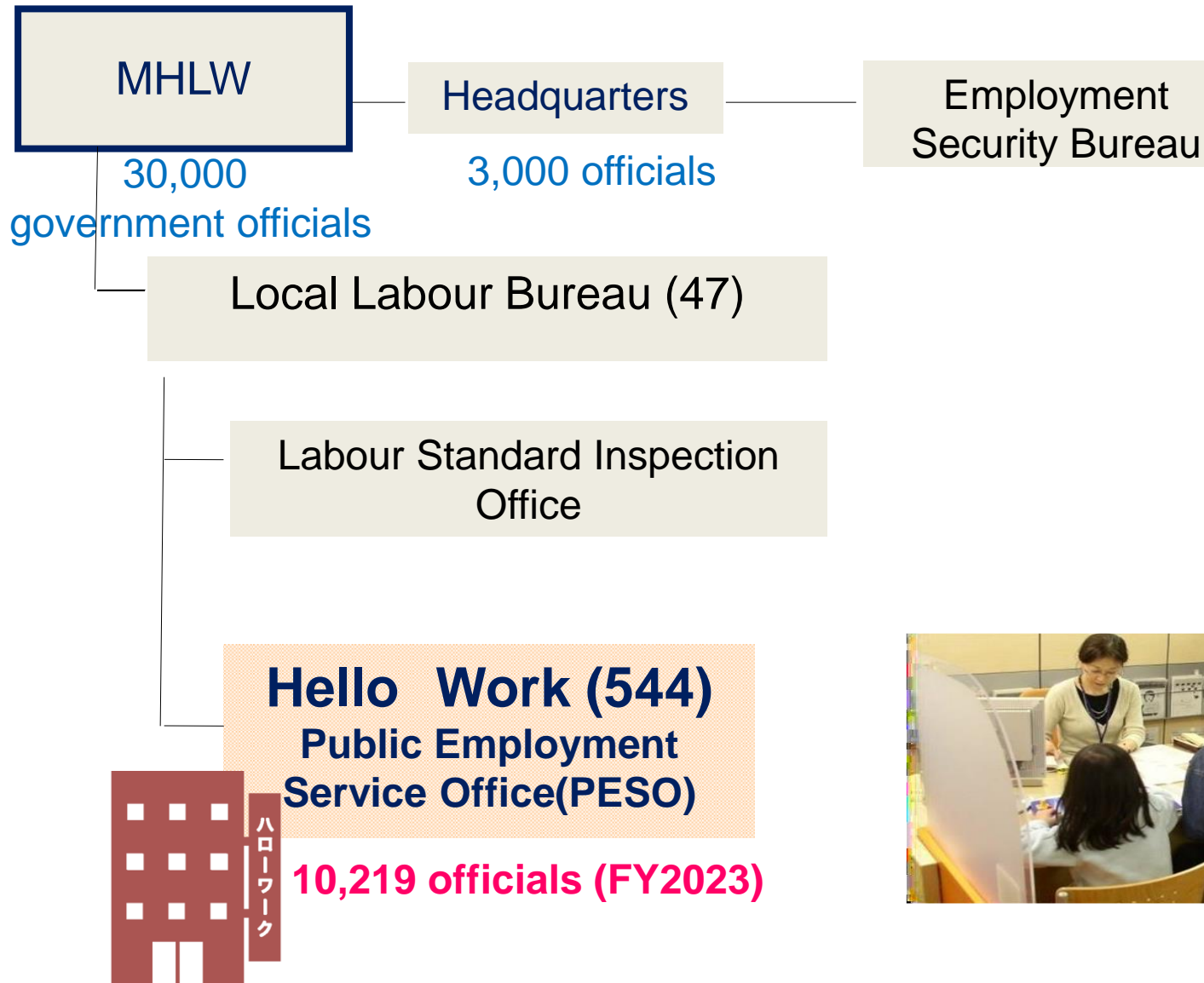


July 17th, 2024 WAPES Asia-Pacific Regional Conference

Minako TAKASAKI

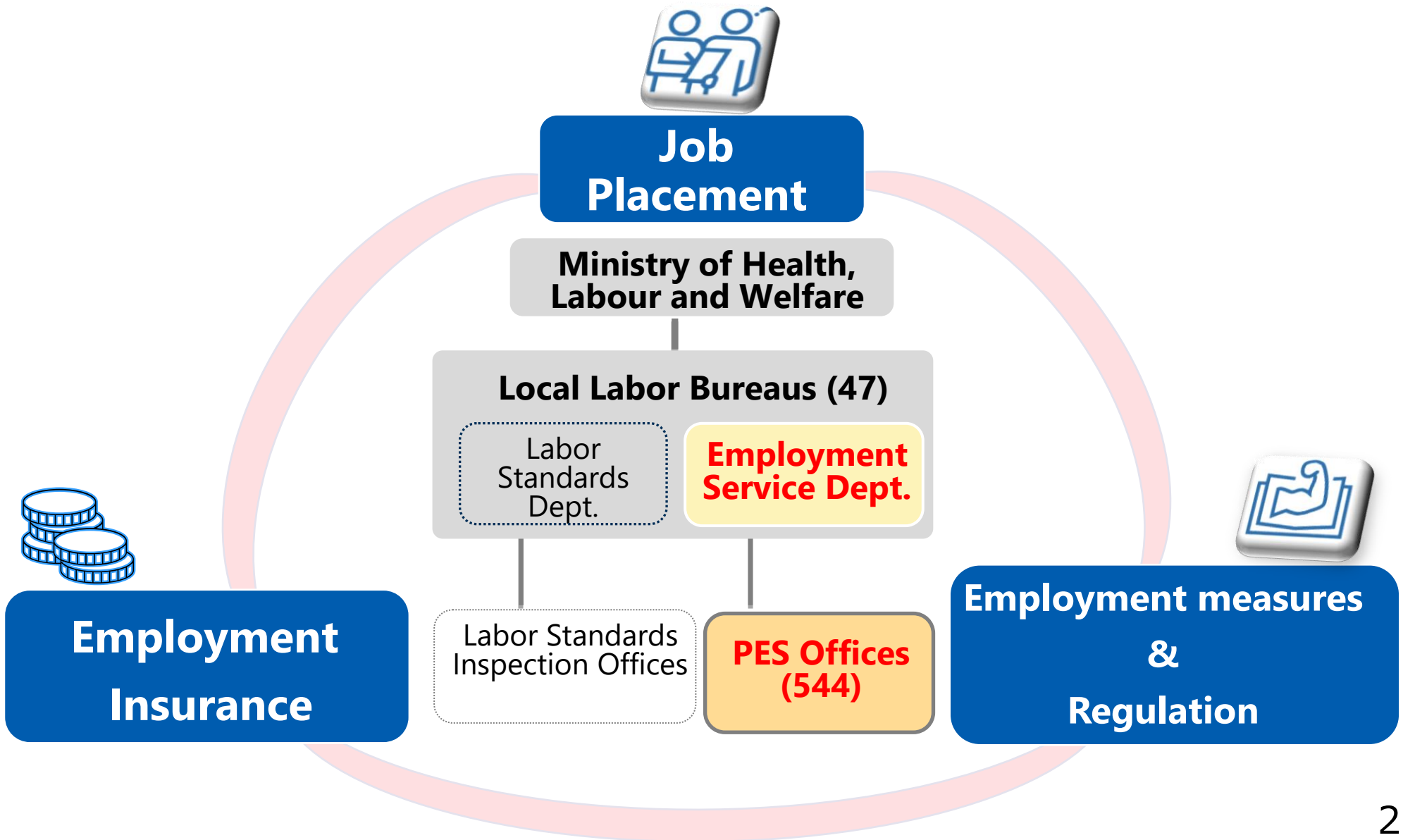
Deputy Director,
Employment Policy Division,
Ministry of Health, Labour and Welfare, Japan

Ministry of Health, Labour and Welfare (MHLW)



Roles of “Hello Work”

Hello Work : National comprehensive employment service network



Network of Hello Work Services for Job Seekers

Hello Work System



Job placements



Consultation



Career counseling



Employment insurance benefits



Workshops

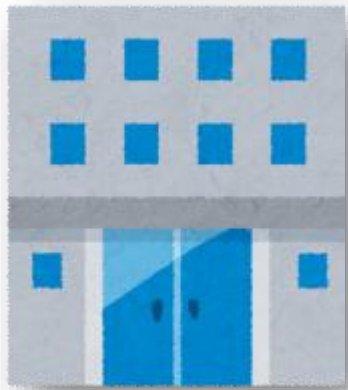


Vocational trainings



Hello Work Specialized in targets

Hello Work
offices
(544)



Mother's Corner (185)

Provides job placement support for women raising children and others.

Youth Support Corner (200)

Provides job placement support for job hoppers aged under 35, for their early transition to more stable employment.

Employment Support Office for the generation during economic downturns (92)

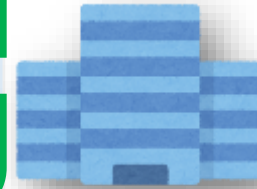
Provides comprehensive support from job placement to workplace retention for the generation during economic downturns in job-hunting.

Office for Lifelong Active Participation Support (300)

Provides comprehensive support including career life redesign and team support for older job seekers.

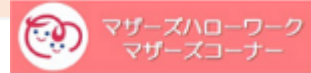
Labor Shortage Measures Corner (117)

Provides matching support for fields with high job demand such as healthcare, childcare, construction, security, transportation, etc.



Mothers' Hello Work (21)

Provide job placement support for women raising children and others in similar situations.



Hello Work for New Graduates (56)

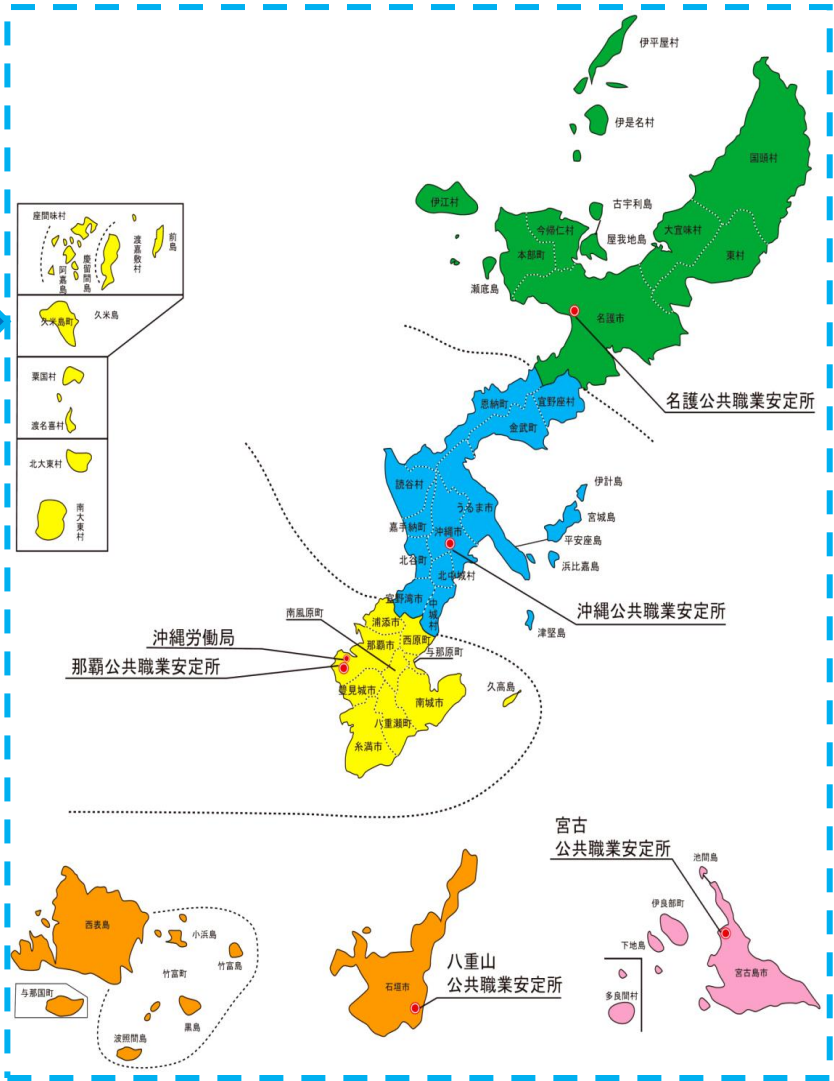
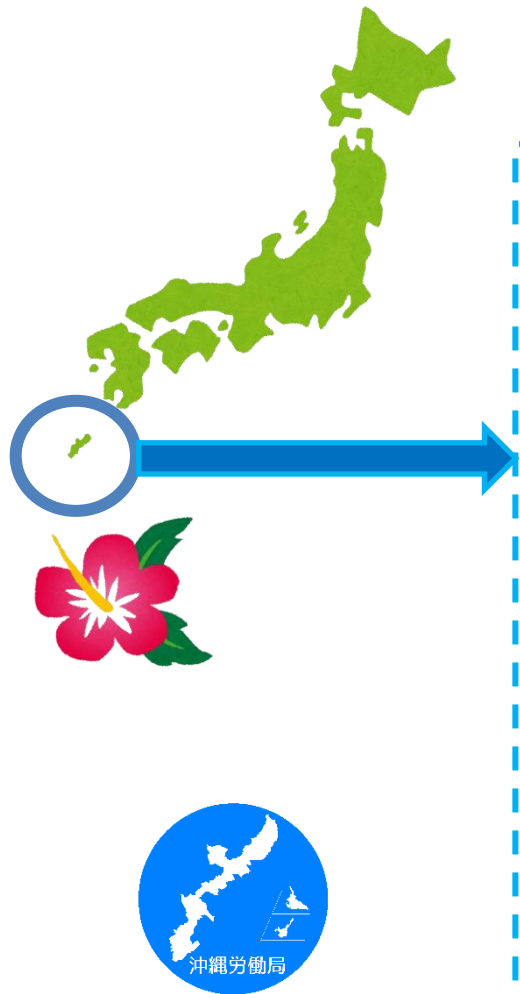
Provides tailored job placement support for students and graduates generally within approximately three years of graduation.



Hello Work for Youth (21)

Provides tailored job placement support for job hoppers aged under 35, for their early transition to more stable employment.

< Where is Okinawa? >



Population

1.46 million (2024.4)

Islands with residents

47

Number of PESO (Hello Work)

5

Mothers Corner

2



<Why is Okinawa focused?>



Current situation in Okinawa

- 1 Proportion of single-mother household (FY2020) **2.21 %**
⇒ Highest in Japan (National average 1.16)
- 2 Divorce rate (2021) **2.20 %**
⇒ Highest in Japan (National average 1.50)
- 3 Labour force participation rates for women (2022)
Aged 25-29: 86.5%, 30-34: 85.4, 35-39: 83.3, 40-44: 81.6
⇒ Child-rearing generations (aged 25-44) is over 80%

Hybrid job consulting services targeting for job seeking parents



Job placement rate (FY2023) at Mothers' Hello Work

Okinawa 99.5% (National average 97.2%)



Online Services at Mothers' Corner in Okinawa

Promotion
Preparation



Job search / Placement



Find
a
Job

SNS (LINE, X, YouTube)

Hello Work System



★ Menu ★

1 Job consultation / Placement

Online consultation/placement by well-learned and matured consultants

2 Search for Family-friendly jobs

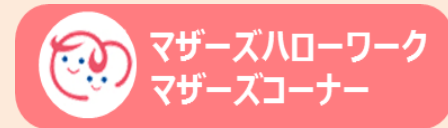
Work with flexible conditions (work from home, hours, leaves)

3 Workshops

Preparation for resume and job interviews, PC skills, etc.

4 Information Hub on child care

Nursery schools, various childcare support services



Face to Face Services at Mothers' Hello Work (Layout)



*Thank you so much for
your kind attention...*



ひと、暮らし、みらいのために



厚生労働省
Ministry of Health, Labour and Welfare